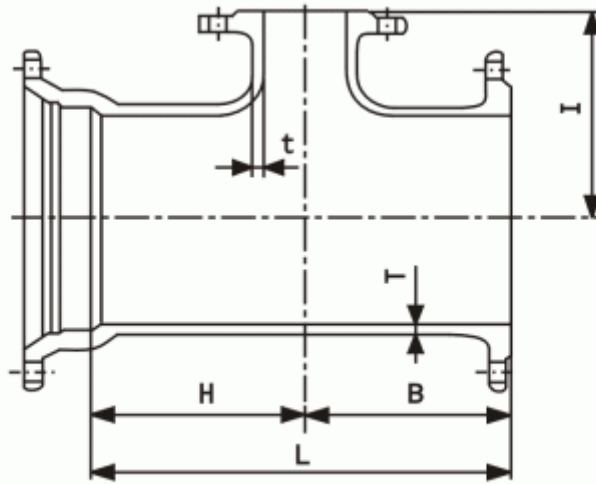
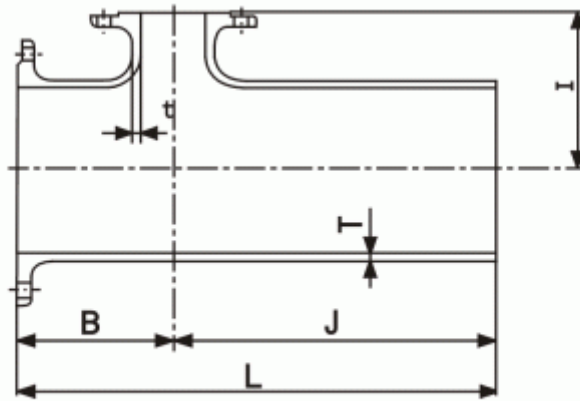




●Type K Tee for Sluice Valves



■A1



■A2

Unit: mm

Nominal size	Thickness		Dimensions						Weight (kg)								
	D	d	T	t	B	H	I	L ₁	L ₂	A1				A2			
										7.5 K	10 K	16 K	20 K	7.5 K	10 K	16 K	20 K
400	100	14.0	10	230	230	320	460	790	122	117.8	135.6	142.8	131	126.8	144.6	151.8	
450	100	14.5	10	240	240	340	480	800	147	141.6	165.4	174.0	155	149.6	173.4	182.0	
500	100	15.0	10	250	250	360	500	810	171	165.5	194.7	204.2	178	172.5	201.7	211.2	
600	100	16.0	11	280	280	440	560	880	228	226.3	263.5	275.0	240	238.3	275.5	287.0	
700	150	17.0	12	310	310	490	620	930	305	306.6	354.8	400.8	314	315.6	363.8	409.8	
800	150	18.0	13	330	330	550	660	960	387	388.0	454.4	536.6	394	411.2	477.6	559.8	
900	200	19.0	14	370	370	610	740	1040	502	516.7	595.6	696.9	507	486.9	579.5	680.8	
1000	200	20.0	15	400	400	670	800	1100	624	621.7	731.8	-	620	617.7	727.8	-	
1100	200	21.0	16	420	420	730	840	1140	747	747.7	865.8	-	740	740.7	858.8	-	
1200	250	22.0	17	460	460	790	920	1210	908	919.2	1060.0	-	893	904.2	1045.0	-	
1350	250	24.0	19	490	490	870	980	1250	1170	1182.2	1363.0	-	1130	1142.2	1323.0	-	
1500	300	26.0	21	530	530	960	1060	1320	1470	1490.2	1710.5	-	1420	1440.2	1660.5	-	
1600	300	27.5	21	540	540	1010	1080	1420	1720	1737.2	-	-	1730	1747.2	-	-	
1650	300	28.0	21	540	540	1030	1080	1430	1810	1829.2	-	-	1820	1839.2	-	-	
1800	350	30.0	21	580	580	1120	1160	1510	2200	2234.6	-	-	2200	2234.6	-	-	
2000	350	32.0	21	590	590	1220	1180	1530	2660	2715.6	-	-	2620	2675.6	-	-	
2100	400	33.0	21	620	620	1280	1240	1590	2980	3052.6	-	-	2930	3002.6	-	-	
2200	400	34.0	21	630	630	1350	1260	1610	3290	3357.6	-	-	3220	3287.6	-	-	
2400	450	36.0	21	670	670	1430	1340	1690	4010	4119.4	-	-	3880	3989.4	-	-	
2600	500	37.5	21	710	710	1550	1420	1560	4790	4896.3	-	-	4060	4190.3	-	-	